

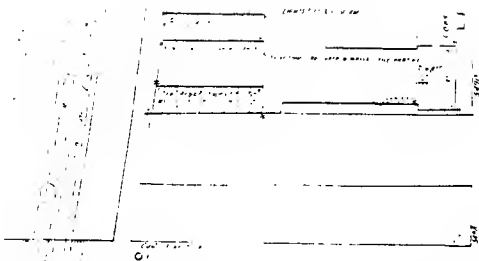
BUILDING NO. 4.  
BUILDING NAME: THE MAYFAIR APARTMENTS  
LOCATION: 1650-1666 East 56th Street CITY: Chicago,  
COUNTY: Cook STATE: Illinois ZIP: \_\_\_\_\_  
OWNER: Citicorp  
ADDRESS: 399 Park Ave. CITY: New York  
STATE: New York ZIP: 10043  
LOCATION OF LEGAL DESCRIPTION: Cook County Recorder of Deeds  
118 N. Clark Street, Chicago, IL  
VERBAL BOUNDARY DESCRIPTION: Located on the northwest corner of South Hyde Park  
Boulevard and East 55th Street, the boundary  
follows a line ten (10) feet from the building wall.  
APPROXIMATE ACREAGE: 0.24 DATE OF CONSTRUCTION: 1926  
ARCHITECT AND/OR BUILDER Lowenberg & Lowenberg, architects; J. H. Buttas &  
DESCRIPTION: Chas. Henery, owners; B. W. Construction Co., Contractor

The Mayfair is a rectangular (62'x135'), twelve story red brick building with limestone trim and a three story limestone base. Built in the Georgian Revival style, the three story base is designed in a formal symmetrical manner with a rusticated lower level with five bays divided by applied columns with Corinthian capitals, balustrades across the bays below the second floor fenestration, and a restrained entryway with a flat stone hood supported by ancones. The limestone treatment is carried up around the central bay windows at the fourth level and is finished with a cornice with dentils and a broken swan pediment. The applied column and balustrade treatment is carried around the side elevation as well, which also contains a series of shop windows divided by rusticated stone columns. At the 11th floor level, the balustrade treatment is repeated, as is the stone cornice and broken swan pediment over the central bay windows. All the windows, except those at the first level, are wood double hung 6/6. The upper brick portion of the building is framed with brick quoins and a projecting stone cornice with dentils.

Having 88 apartment units, the Mayfair ranks as one of the smaller of the apartment hotels in Hyde Park.

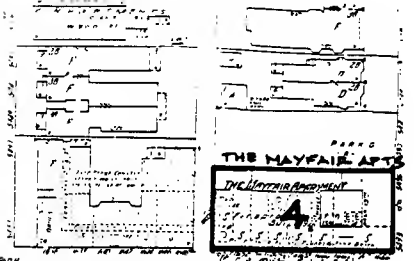
#### SIGNIFICANCE:

The Mayfair is a distinctive example of the use of past styles and ornament to provide the sense of tradition so important to linking the apartment hotel forms to ones found most acceptable in the past. In the Mayfair can be seen the designer's conscious attempt to use familiar classical ornamentation at the three lower levels, and to even repeat it at the top level in order to direct the attention of those close by to the more moderate and less threatening first few stories, as well as to downplay the building's height. The ornamentation on the Mayfair suggests a sense of intimacy that is surprising in light of the actual scale of the building.



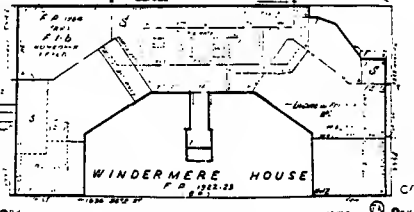
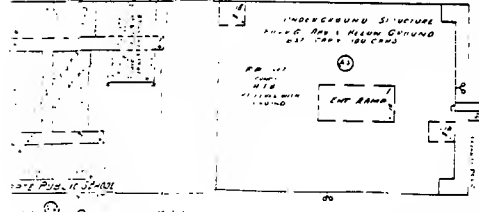
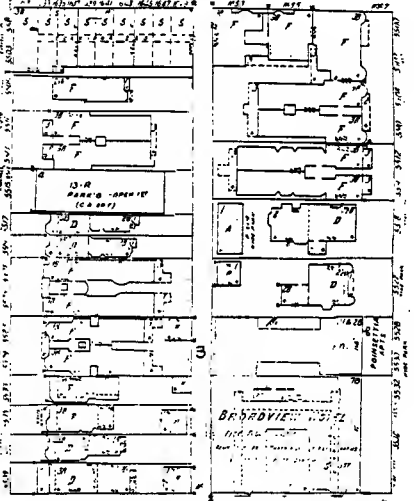
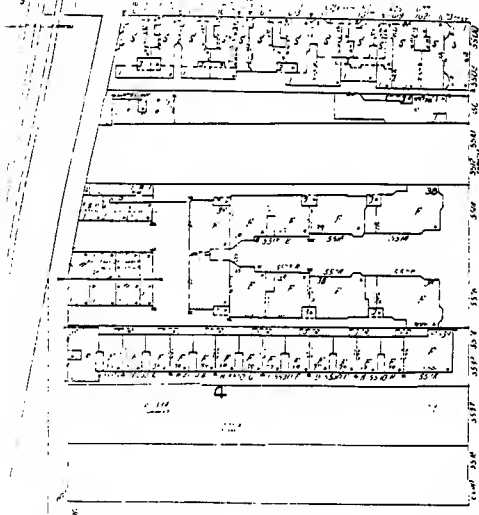
AV. CORNELL

E. 55<sup>TH</sup> ST.



THE MAYFAIR APPT  
 THE MAYFAIR APPT  
 4

ST.



E. 56<sup>TH</sup> ST.

ST.

Scale of Feet

JACKSON PARK

0

JUNY 1919



IN REPLY REFER TO:

# United States Department of the Interior

NATIONAL PARK SERVICE  
P.O. BOX 37127  
WASHINGTON, D.C. 20013-7127

RECEIVED

JUN 6 1986

HISTORIC PRESERVATION

MAY 23 1986

The Director of the National Park Service is pleased to inform you that the following properties have been entered in the National Register of Historic Places beginning May 11, 1986 and ending May 17, 1986. For further information call (202) 343-9552.

STATE, County, Vicinity, Property, Address, (Date Listed)

ALABAMA, Calhoun County, Jacksonville, Downtown Jacksonville Historic District, Roughly bounded by College, Thomas, Coffee, and Spring Sts. (05/13/86)

ALABAMA, Limestone County, Athens, Houston, Governor George Smith, House, 101 N. Houston St. (05/15/86)

ALABAMA, Mobile County, Mobile, Paterson House, 1673 Government St. (05/15/86)

ALABAMA, Tuscaloosa County, Tuscaloosa, Downtown Tuscaloosa Historic District, Roughly bounded by Fourth St., Twenty-second Ave., Seventh St., and Twenty-fifth Ave. (05/13/86)

ARIZONA, Coconino County, Grand Canyon vicinity, Trans-Canyon Telephone Line, Grand Canyon National Park, Grand Canyon along Bright Angel and North Kaibab Trails from South Rim to Roaring Springs and South Kaibab Trail to Tipoff (05/13/86)

HAWAII, Hawaii County, Bobcat Trail Habitation Cave (50-10-30-5004) (05/15/86)

ILLINOIS, Cook County, Barrington, Barrington Historic District, Roughly bounded by Dundee, W. Coolidge, E. Hillside, and S. Grove Aves., and S. Hough, E. Lake, Main, N. Garfield, and E. Applebee Sts. (also in Lake County) (05/16/86)

ILLINOIS, Cook County, Chicago, Chicago Beach Hotel (Hyde Park Apartment Hotels TR), 5100-5110 S. Cornell Ave. (05/14/86)

ILLINOIS, Cook County, Chicago, East Park Towers (Hyde Park Apartment Hotels TR), 5236-5252 S. Hyde Park Blvd. (05/14/86)

ILLINOIS, Cook County, Chicago, Flamingo-On-The-Lake Apartments (Hyde Park Apartment Hotels TR), 5500-5520 S. Shore Dr. (05/14/86)

ILLINOIS, Cook County, Chicago, Hotel Del Prado (Hyde Park Apartment Hotels TR), 5307 S. Hyde Park Blvd. (05/14/86)

ILLINOIS, Cook County, Chicago, Hyde Park-Kenwood Historic District (Boundary increase), 825-833 E. Fifty-second St. (05/16/86)

ILLINOIS, Cook County, Chicago, Lakeview Historic District (Boundary Increase), 701, 705, 711, 715-717, 721, 733-735, 737, and 739 Belmont, 3162 & 3164 Orchard and 3171 Halsted (05/16/86)

ILLINOIS, Cook County, Chicago, Mayfair Apartments (Hyde Park Apartment Hotels TR), 1650-1666 E. Fifty-sixth St. (05/14/86)

ILLINOIS, Cook County, Chicago, Poinsetta Apartments (Hyde Park Apartment Hotels TR), 5528 S. Hyde Park Blvd. (05/14/86)

ILLINOIS, Cook County, Chicago, Shoreland Hotel (Hyde Park Apartment Hotels TR), 5450-5484 S. Shore Dr. (05/14/86)

ILLINOIS, Vermilion County, Danville, Stone Arch Bridge, 760-800 E. Main St. (05/16/86)

KENTUCKY, Campbell County, Fort Thomas, Fort Thomas Military Reservation District, Roughly bounded by Pearson, Alexander, and Cochran Aves., River Rd., and S. Fort Thomas Ave. (05/15/86)